

## Introduction

Clenergy is a publicly listed company (SHA: 603628) that designs and manufactures a range of solar PV mounting systems, it has also active in the commercial and utility solar park development area. The Australian operations has recently created a structural and geotechnical engineering department to provide structural engineering accreditations where required. This work has traditionally been outsourced or referred to an outside organisation, however with the growth in the commercial area it is now a viable and growing part of the revenue stream for the Australian operations. This department currently employs 2 Engineers and a Manager to address the market, this also serves as a major differentiator for Clenergy Australia in the market resulting in better service and outcomes for clients and increased revenue. The external partner assisting in the delivery of this service is MW Engineering (ABN 37 605 815 585).

## Description of Services

Clenergy provides Structural Engineering Services for the PV-ezRack mounting system range including all roof and ground mount products. Most PV installations can be completed by using the generic Clenergy engineering documents, however where project specific engineering is required the Clenergy Engineering Services team can assist with project specific consultations and tailored engineering project certificates compliant with the relevant Australian standards. These services are specific for the Clenergy PV mounting systems and the roofs they are installed on. The scope of work includes the design of the component combination required for a project and the structural compliance check and sign off for this solution. The scope for roof compliance check is limited to the suitability of purlins, rafters and trusses based on a planned panel layout against the Australian standards. For ground mount systems we also provide consultancy and design services for the foundations and earthing requirements. Project sizes range from a couple of kilowatts to a couple of megawatts.

## Team & Qualifications

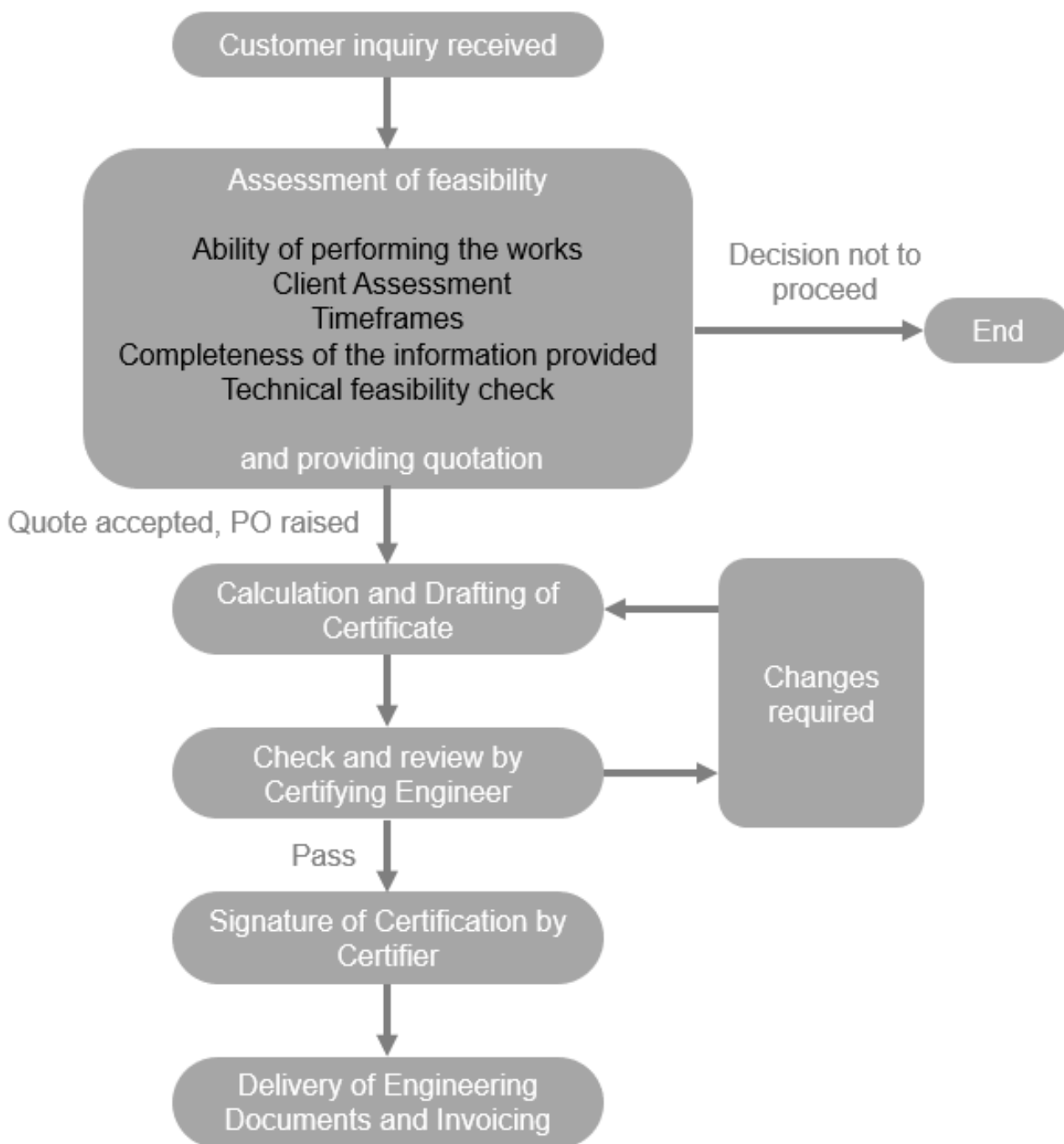
Geza Anderson – Role: Manager of Engineering Services, Qualification: Degree in Engineering Management & Business Administration, Mechanical Technician

Stella Mendonca – Role: Structural Engineer, Qualification: Civil Engineer

Yuneska Harris - Structural Engineer, Qualification: Civil Engineer

Alberto Escobar - Certifying Engineer (External, MW Engineering),  
Qualification: Civil Engineer, MIEAust, BRP NPER RPEQ 18579. BRP EC 46542

**Process**  
**for issuing project engineering certificates**



## Current relevant insurances

Insurance Holder	Type of Insurance	Value	Insurer	Policy Number
Clenergy	Clean Energy Professional Indemnity and Liability	\$5m	Chubb	04CI012843
Clenergy	Public/Products Liability	\$20m	Gallagher	10010201
MW Engineering	LIMIT OF INDEMNITY AGGREGATE LIMIT PUBLIC LIABILITY PRODUCTS LIABILITY	\$5m \$15m \$10m \$10m	Arch	P0006623PI2019AU2

## Customer Profile

This service is mainly utilised for commercial PV installations, therefore the majority of the clients for our engineering services are integrators (examples below) and retailers focused on this market segment.

### Todae Solar

Is one of the best know commercial solar provider in Australia. It is based in Sydney, designs and delivers commercial PV systems nationwide. Todae Solar has been Australia's #1 Commercial Solar Installer for many years. With more than 15 years' experience and over 90MW's installed, Todae Solar has Australia's most impressive portfolio of corporate clients backed by the quality of a multi-award-winning team.

### Solgen Energy Group

Solgen is another well-known commercial PV integrator. Solgen Energy is an award winning, industry leading Australian solar company with unrivalled experience in commercial and industrial scale solar for over 10 years. In volume and profile, it is similar to Todae solar with the difference that the group also has a distribution arm.

### MM Electrical Merchandising

This organisation is one of the largest electrical wholesalers in Australia. It has stores nationwide and functions as a distributor of electrical components. In recent years the company became a major partner for Clenergy. The engineering services are delivered and invoiced through MM to installers and integrators who purchase the Clenergy mounting systems from their stores. The group employs 1,600 staff with over 150 branch locations.

## Examples of Engineering Documents

Available on request

**For further information or assistance please contact**

**Geza Anderson**

**Manager of Engineering Services**

**T +61 3 9239 8086**